



PRECISION FABRICATION FOR A GLOBAL MARKET

AN ISO 9001:2015 AND ZED GOLD (ZERO DEFECT, ZERO EFFECT) CERTIFIED FACILITY



ABOUT US: WHO WE ARE

Axis Industries is a leading **ISO 9001:2015** and **ZED Gold** (**Zero defect, Zero effect**) certified manufacturer specializing in **high-precision sheet metal fabrication** and **machined components**.

Since **2010**, we have served customers and industry leaders, delivering complex, mission-critical components for demanding sectors like **Automotive, Medical Systems, and Consumer Goods**.

We act as a seamless extension of your manufacturing process, offering **end-to-end design, tooling, and production capabilities** powered by a **quality-first** manufacturing culture.



ISO 9001:2015 Certified



Zed Gold Certified

BASIC INFORMATION

Proprietor Name	Vikas Mehta
Industries	Automotive, Healthcare, Hospitality, White goods and Consumer appliances
IEC number	3000010548
Total number of employees	100-150
Year of establishment	2010
Size of premises	60000 sq feet (3 units)
Upcoming expansion	New plant in Derabassi of 3 acres
Registered address	Plot No. D41A&P, Industrial focal point, Derabassi, Punjab, 140507
Location	Urban, 30 minutes from Chandigarh International Airport
Website	axisindustries.co.in

OUR MISSION, VISION AND VALUES



VISION

To become a globally trusted engineering and fabrication partner known for precision, reliability, and innovative manufacturing.



MISSION

To deliver engineered metal products with consistent quality, competitive pricing, and world-class customer experience

What We Stand For



Customer-First Delivery

We commit to reliability, transparency, and long-term partnerships built on trust and consistent performance.



Zero-Compromise Quality

Driven by internationally certified systems and a strong culture of process discipline, we prioritise precision in every component we manufacture.



Continuous Improvement & Innovation

We invest in better tools, smarter processes, and new technology to ensure our customers always stay ahead in their markets.

OUR CORE DIFFERENTIATORS



Proven Reliability

- Rejection rates consistently **below 1.5% annually** on critical high-volume OEM parts.
- **Client Benefit:** Lower inbound inspection, fewer production stoppages, long-term cost savings.



End-to-End Solution

- In-house tool room with CAD/CAM, machining, welding, fabrication, and finishing.
- **Client Benefit:** Faster development cycles, single-point accountability, full control from design to delivery.



Quality Assurance

- ISO 9001:2015 certified, ZED Gold (Zero defect, Zero effect). We practice strong process control, documentation and adherence to international quality norms.
- **Client Benefit:** Consistently reliable quality and reduced monitoring effort



Logistics Advantage

- Located 30 minutes from Chandigarh International Airport (IXC) and 1.5 hrs from the nearest dry port, ICD Ludhiana
- **Client Benefit:** Faster export logistics, shorter transit times, and reliable freight handling.



Scalability & Growth

- Currently operating 3 manufacturing units now being consolidated to a new 3-acre facility with significant spare capacity for future expansion.
- **Client Benefit:** Assured scalability, long-term supply stability, and the ability to grow volumes without risk.

OUR CAPABILITIES



Stamping & Forming

- 10–100T mechanical presses
- 200T hydraulic press
- 75T high speed pneumatic press
- 150T 4-axis CNC press brake machine



Fabrication & Welding

- 25+ MIG welding sets (250–400 amp)
- Dedicated jigs and fixtures for accuracy
- Laser cutting machine (up to 12mm Mild steel)



Machining & Tooling

- CNC turning centers, VMC, Vertical milling machine, Radial drill machine, Vertical drilling machines, NC tapping arm, Lathe, Surface grinder
- Fully in-house CAD/CAM tooling development

OUR CAPABILITIES



Cutting & Bending

- Hydraulic shearing (up to 6mm HR)
- NC pipe bending
- Bandsaw cutting machine



Finishing Support & Surface Treatment

- Powder coating
- Trivalent Zinc plating (export approved)
- Shot blasting

Quality & Testing



- Current certified-calibrated measuring instruments
- Rockwell Hardness Tester
- DFT meter
- Welding penetration inspection system
- OEM level documentation
- ISO 9001:2015, ZED Gold certified

INDUSTRIES WE SERVE

Here are the key industries we currently serve in India and international markets:



Domestic Presence

We currently supply to leading manufacturers across the following sectors:

- **Automotive and agricultural implements**
- **White goods and consumer appliances**
- **Healthcare**



Export Footprint

We export ready to assemble **metal furniture** for the **hospitality industry** in the following countries:

- **U.S.**
- **Canada**



Expansion Roadmap

To strengthen our international presence and diversify our customer base, we are actively developing partnerships in:

- **Australia**
- **Europe**
- **Middle East**

Our objective is to establish long-term supply collaborations for both engineered components and fabricated products.



MAJOR CUSTOMERS

Our major clients from the **Automotive industry** are:

- International Tractors Limited (Sonalika)
- Yanmar (collaboration with Sonalika)
- Action Construction Equipment Ltd. (ACE)
- BCS Group, Italy (Indian subsidiary)
- Preet Tractors Ltd.
- Emmforce Autotech Ltd.



MAJOR CUSTOMERS

Our major clients from the **Healthcare and Hospitality industry** are:

- KSI Medicare
- Omland Hospitality Products Ltd. (Canada)
- Premier Furniture Industries (U.S.)



OT TABLE | OT LIGHTS | HOSPITAL FURNITURE | STEAM STERILIZERS

MAJOR CUSTOMERS

Our major clients from the **White goods and consumer appliances** industry are:

- Inflame
- HAC
- Elin
- Micro Instruments Co.



OUR PRODUCTS

Some of the products for our customers in the **Automotive** sector are:

- Fuel Tank Frames
- Floors
- Tube & Side Cover assembly
- Tractor Mudguard
- Reaper Binder
- Differential Gear Housing for Electric 3-Wheelers
- Ridger Assembly for tillers
- Parking Brakes
- Many other critical internal brackets and assemblies for tractors



FUEL TANK FRAME



FLOOR

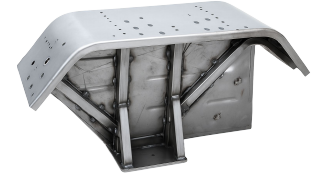


TUBE & SIDE COVER



REAPER BINDER

TRACTOR
MUDGUARD



DIFFERENTIAL GEAR HOUSING



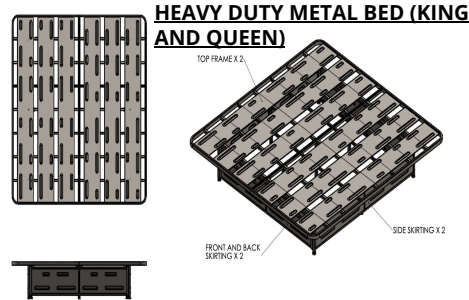
RIDGER ASSEMBLY



OUR PRODUCTS

Some of the products for our customers in the **Healthcare** and **Hospitality** sector are:

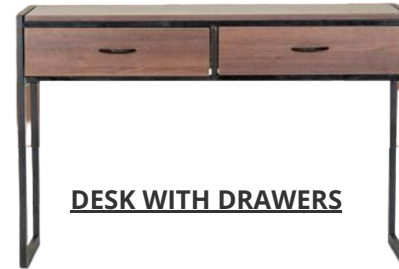
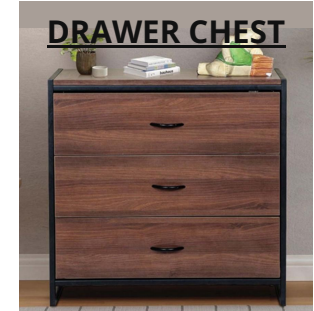
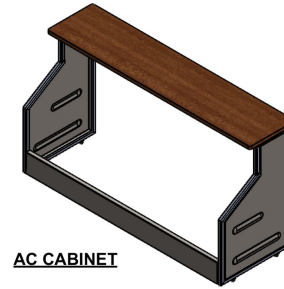
- Heavy Duty Metal Bed (Kind and Queen)
- Luxur Desk
- Bunk Bed
- Single Function Mechanical Bed for Hospitals
- Food Trolleys for Hospitals
- 2 Function Mechanical Bed for Hospitals



OUR PRODUCTS

Some of the products for our customers in the **Healthcare** and **Hospitality** sector are:

- Single Bed
- AC Cabinet
- Drawer Chest
- C-Type Table
- Desk with Drawers
- Night Stand

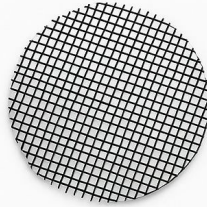


OUR PRODUCTS

Some of the products for our customers in the **White goods and consumer appliances** sector are:

- Hair Dryer Mesh
- U-Clamp
- Steam Cover (Iron Press)
- Housing Flange for Chimney
- Motor Bracket for Wall Fan
- Motor Cover (BLDC chimney motor)
- Trimmer Blade Holder
- Chimney Lock
- Kettle Clamps

The volume for such products ranges from 10,000 to 200,000 pcs/month



A GLIMPSE INTO OUR MANUFACTURING FACILITY

From CAD designs to fully finished assemblies- all under one roof.



Design and development

- In-house CAD/CAM design team



Tool Room

- VMC, Vertical milling machine, Lathe, Surface grinder, Bench grinder
- In-house tools, dies and fixtures



Machining

- CNC machining for tight tolerances
- Vertical and Radial drilling machines, NC tapping arm

These images represent only a part of our facility

A GLIMPSE INTO OUR MANUFACTURING FACILITY

From CAD designs to fully finished assemblies- all under one roof.



Stamping

- Mechanical and Hydraulic presses
- Die-based precision stamping for consistent outputs



Pneumatic Press

- For high volume components
- Automated coil feeding for faster cycle times



NC Shearing

- Sheet cutting upto 6mm H.R.
- Organised raw material handling and storage

These images represent only a part of our facility

A GLIMPSE INTO OUR MANUFACTURING FACILITY

From CAD designs to fully finished assemblies- all under one roof.



Cutting section

- Hydraulic bandsaw and pipe cutting machine
- Pipe, bar and round cutting up to long lengths



Weld shop

- Structured mig welding stations
- Consistent weld quality for batch manufacturing



Fabrication and assembly

- Jig-based fabrication for dimensional accuracy
- Systematic assembly workflow for quick turnaround

These images represent only a part of our facility

LET'S BUILD TOGETHER

Contact us to schedule a call and discuss your next project.
We look forward to partnering with you.



D41 A&P, Focal Point,
Derabassi, Punjab, 140507



+918427011292



armaan@axisindustries.co.in



Armaan Mehta
(Executive Director)